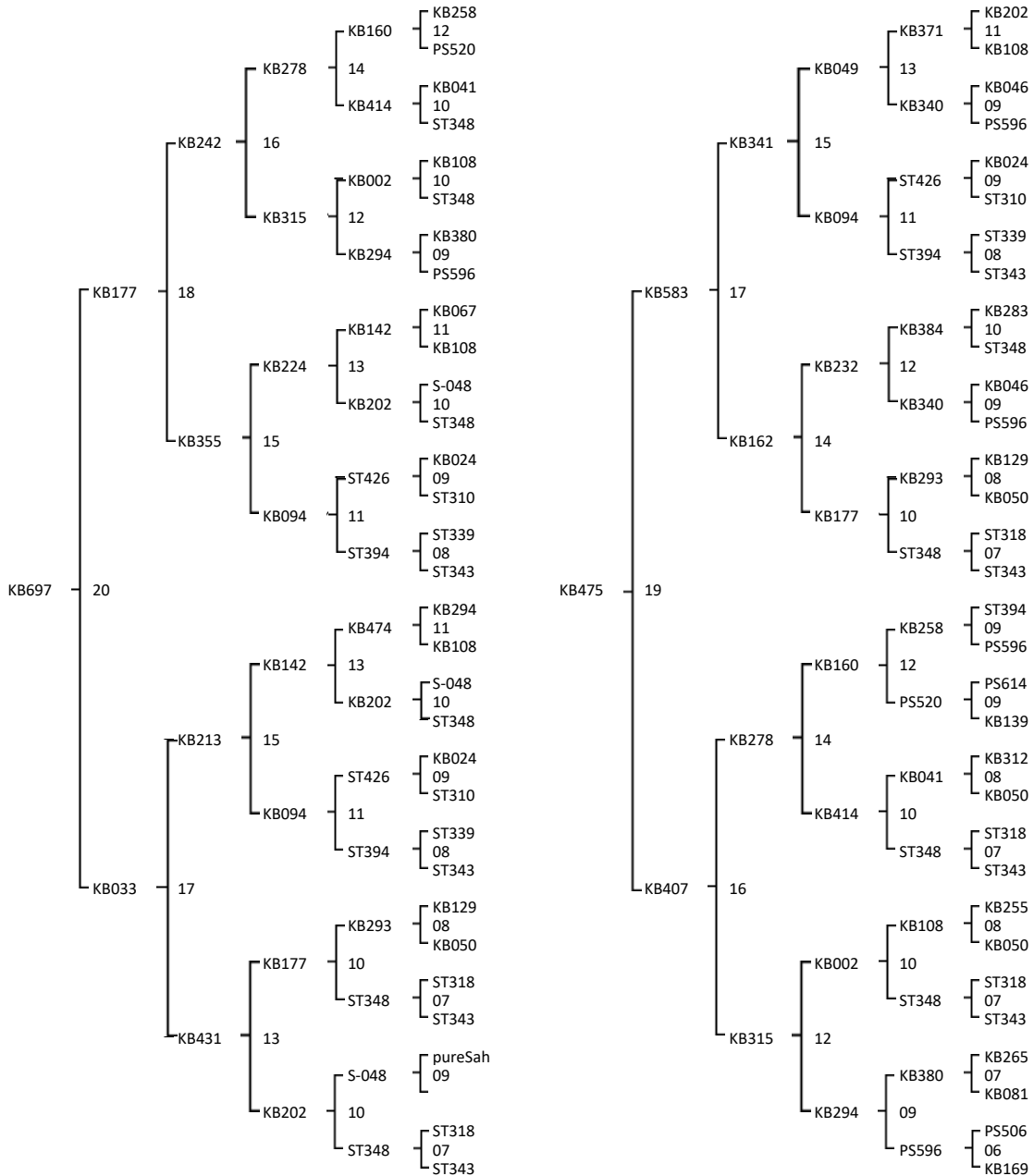




Queen line - KB697 - Origin: pure A.m. Anatolica (A-72) 1986 (Br. Adam)
 Drone line - KB475 - Origin: pure A.m. Sahariensis 2009

Combinatión: . 22 - KB697 x KB475



Swarming: 5
 Agressivity: 4,7
 Frame stability: 4,3
 Honey Yield: 62 kg
 Nosema: 5
 Hygienic behaviour:
 Virus:

Swarming: 5
 Agressivity: 5
 Frame stability: 4,4
 Honey Yield: 99 kg
 Nosema: 5
 Hygienic behaviour:
 Virus:



