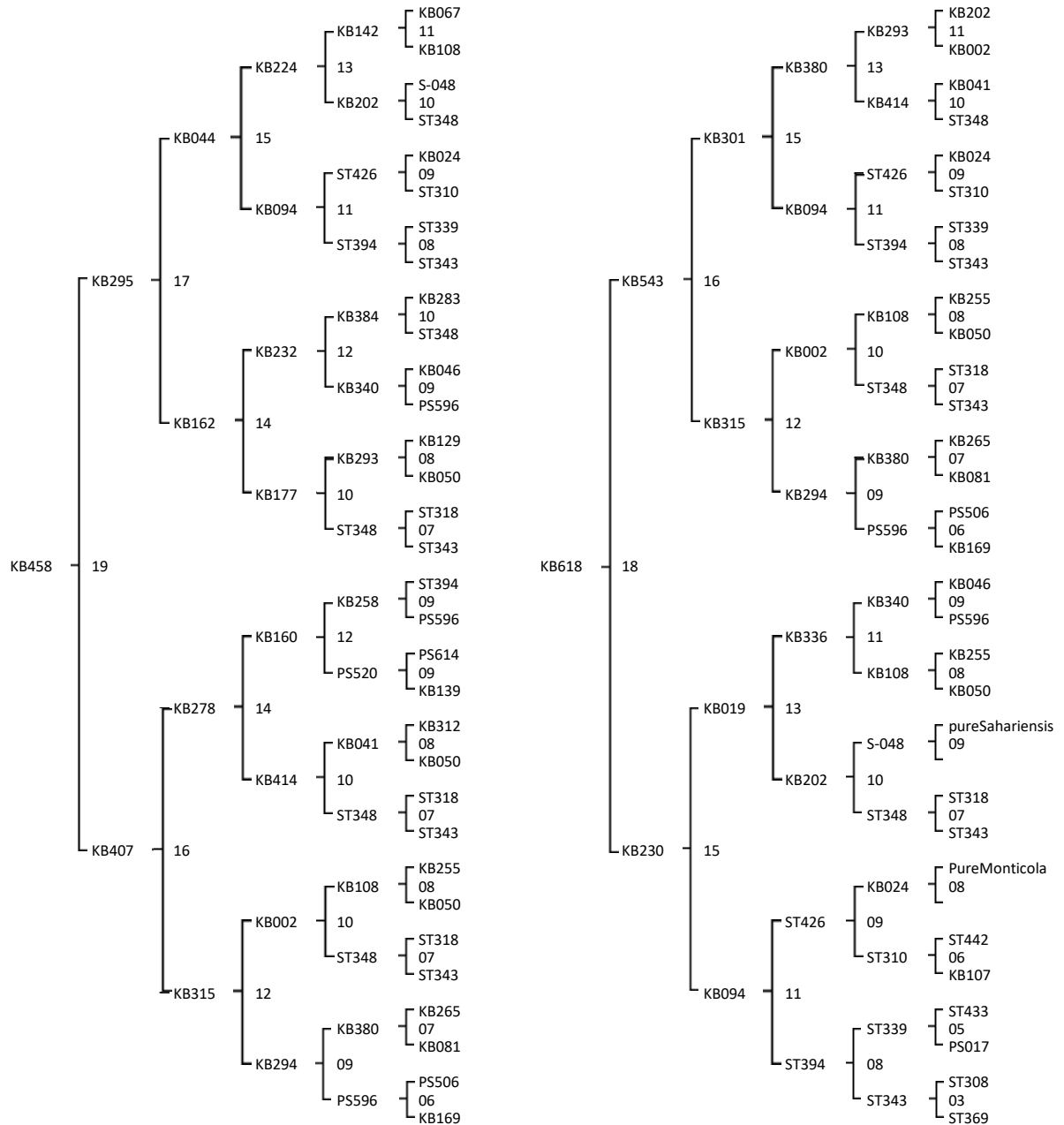




Queen line - KB458 - Origin: pure A.m. Carnica 2002
 Drone line - KB618 - Origin: pure A.m. Sahariensis 2010

Combination: . 21 - KB458 x KB618

Color:



Swarming: 5
 Agessivity: 5
 Frame stability: 4,4
 Honey Yield: 4
 Nosema: 5
 Hygienic behaviour: 5
 Virus: 0

Swarming: 5
 Agessivity: 5
 Frame stability: 4,8
 Honey Yield: 5
 Nosema: 5
 Hygienic behaviour: 5
 Virus: 0

