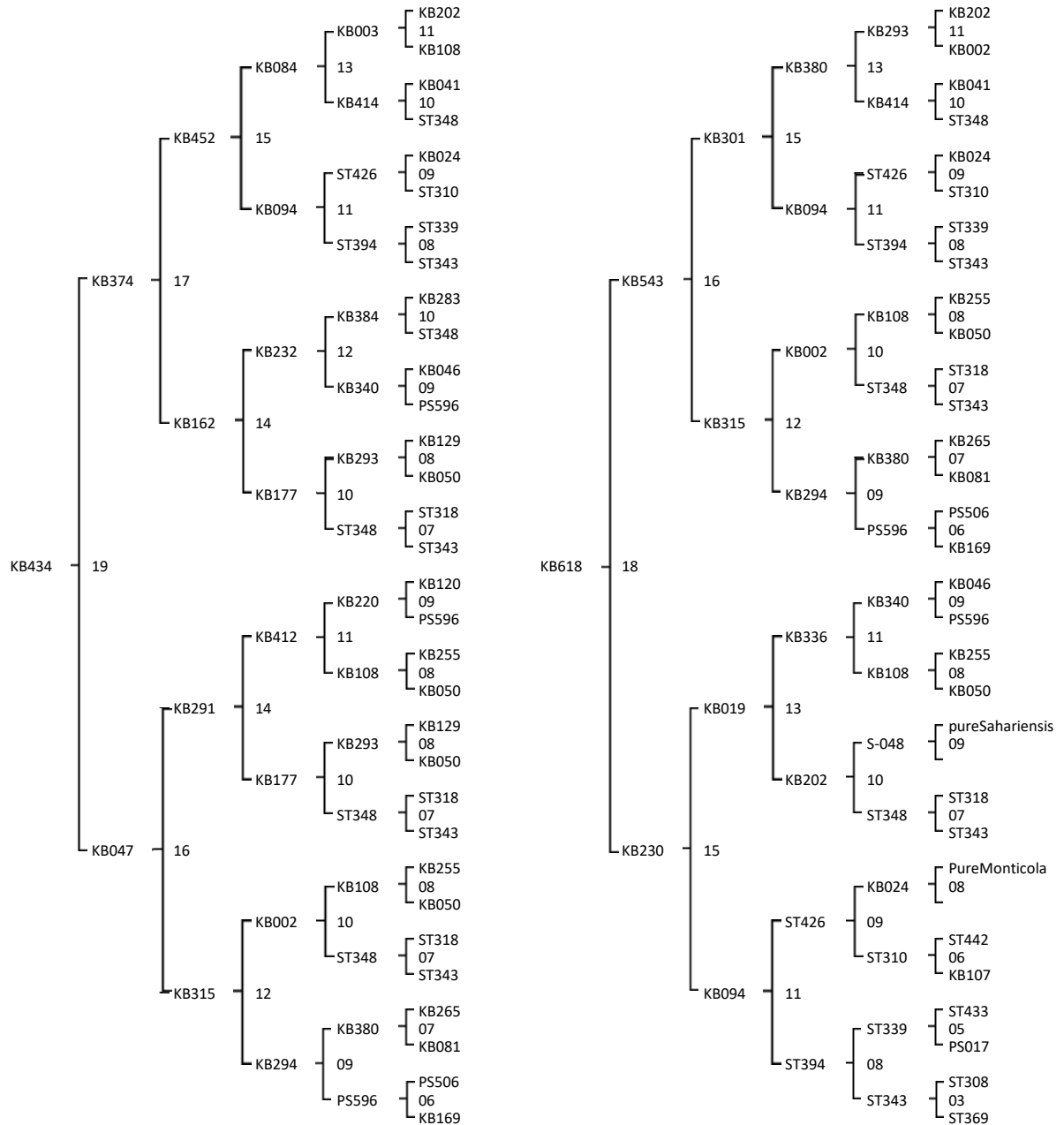




Queen line - KB434 - Origin: pure A.m. Sahariensis 2010
 Drone line - KB618 - Origin: pure A.m. Sahariensis 2010
 Please note the inbreeding.

Combination: . 21 - KB434 x KB618

Color:



Swarming: 5
 Agessivity: 4,6
 Frame stability: 4,2
 Honey Yield: 4
 Nosema: 5
 Hygienic behaviour: 5
 Virus: 0

Swarming: 5
 Agessivity: 5
 Frame stability: 4,8
 Honey Yield: 5
 Nosema: 5
 Hygienic behaviour: 5
 Virus: 0

