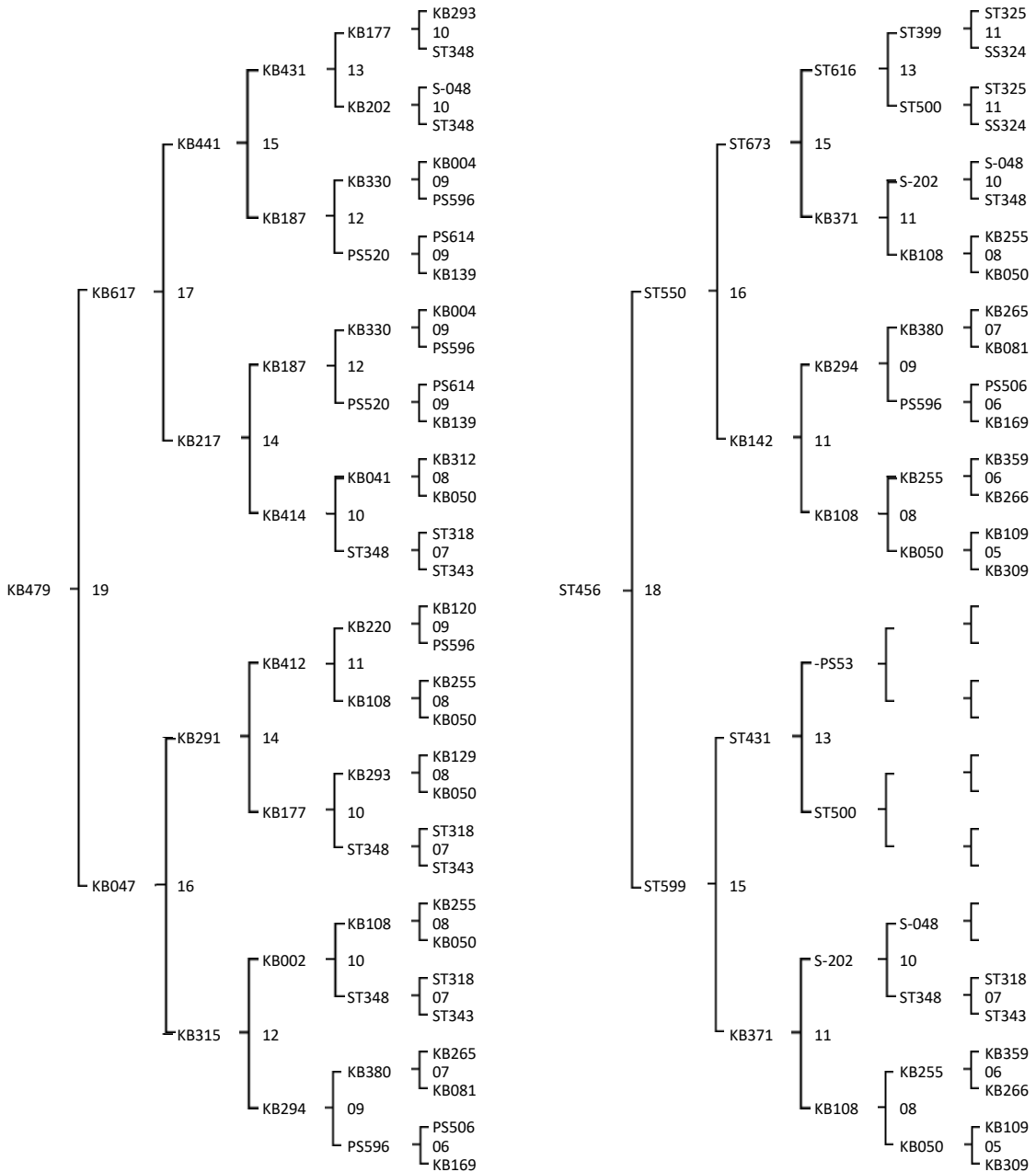




Queen line - KB479 - Origin: pure A.m. Anatolica 2002
 Drone line - ST456 - Origin: pure A.m. Sicula 2009

Combinatión: . 21 - KB479 x ST456

Color:



Swarmming: 5
 Agessivity: 4,5
 Frame stability: 4,5
 Honey Yield: 4
 Nosema: 5
 Hygienic behaviour: 5
 Virus: 0

Swarmming: 5
 Agessivity: 5
 Frame stability: 4,7
 Honey Yield: 5
 Nosema: 5
 Hygienic behaviour: 5
 Virus: 0

