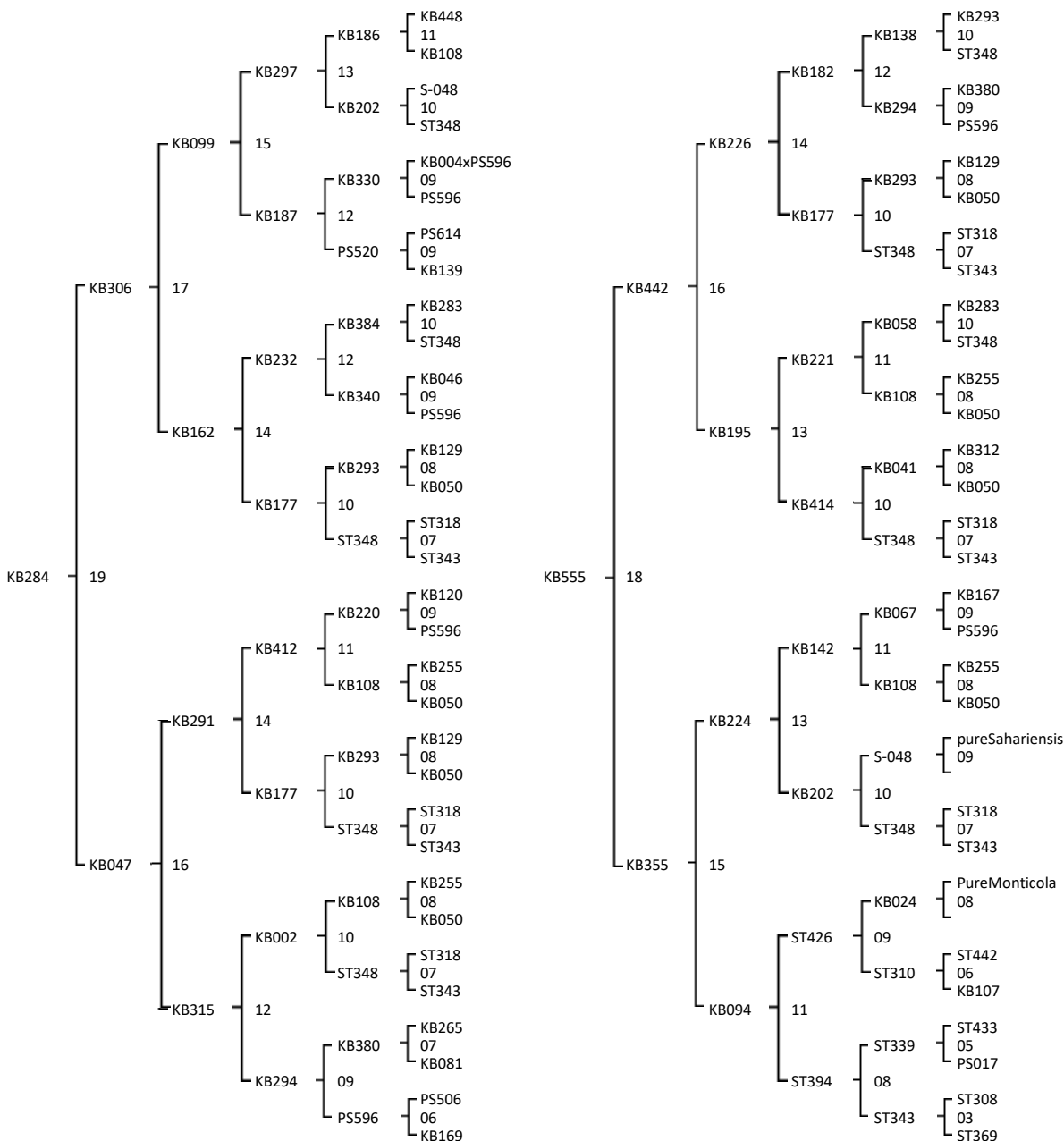




Queen line KB284 - Origin: pure A.m. Monticola 2008
 Drone line KB555 - Origin: pure A.m. Anatolica 2002

Combinatión: . 21 - KB284 x KB555

Color:



Swarmming: 5
 Agessivity: 5
 Frame stability: 4,7
 Honey Yield: 4
 Nosema: 5
 Hygienic behaviour: 5
 Virus: 0

Swarmming: 5
 Agessivity: 4,9
 Frame stability: 4,8
 Honey Yield: 5
 Nosema: 5
 Hygienic behaviour: 5
 Virus: 0

